



A New wave of Living...



SANDY CASTLE

STUDIO APARTMENTS
@ SANDY BEACH RESORTS, KANCHERU,
BHO GAPURAM

**GET ASSURED
RENTAL INCOME**





STUDIO APARTMENTS
@ SANDY BEACH RESORTS, KANCHERU,
BHOGAPURAM

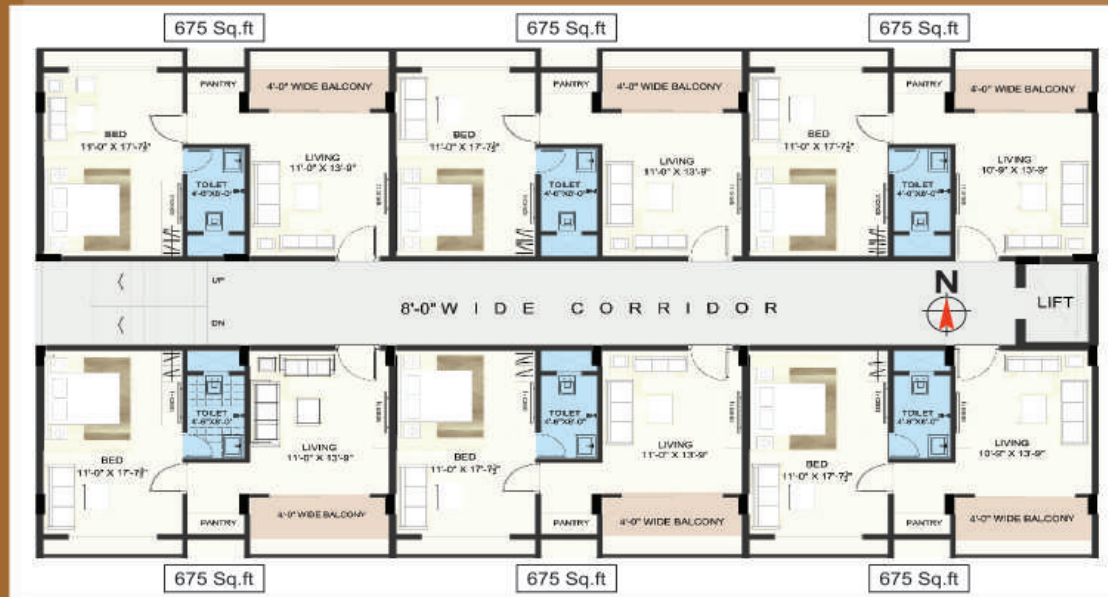
The brand concept of SAN GROUP is to build nature boutique resorts across Visakhapatnam, Andhra Pradesh and provide exceptional hospitality services. Over the years, SANDY BEACH Resorts has been able to find unique destinations and have created quite a stir in the hospitality industry with one-of-a-kind concepts. With the vision to re-invent family and group vacations in Visakhapatnam by offering home-like convenience in a resort-like ambience, the SANDY CASTLE offers luxury and comfortable Studio Apartments.

SALIENT FEATURES

- Studio Apartments
- Stilt + 5 design structure for Apartments
- Contemporary new age architecture
- Grand Entrance with Clubhouse
- Secure Gated Community
- Designer Landscape with Every Apartment
- CCTV security Across Common Areas
- 100% Power Back Up for All Common Areas
- Vasthu Compliant
- The project is situated within close proximity to Green Field Airport

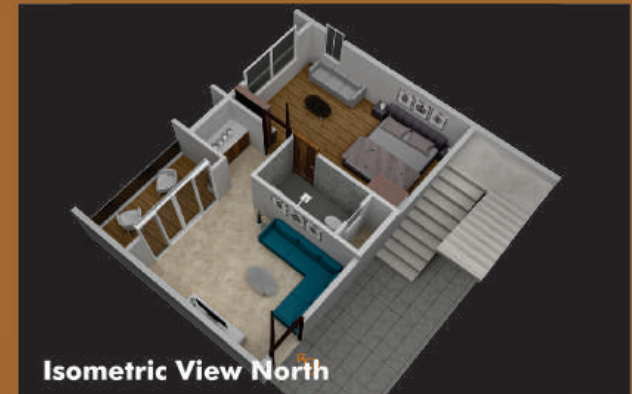


Ariel View



FLOOR PLAN

Typical Floor Plan (Top View)



Isometric View North



Isometric View South

SPECIFICATIONS



STRUCTURE : RCC Framed Structure, Using CRS FE500D Steel and OPC / Slag Cement and Structural Design Considered for Earthquake.



WALLS : Good Quality Table Moulded Non-Modular Bricks (RED BRICKS from Rajahmundry) with River Sand Cement Mortar.



PLASTERING : Plastering with River Sand (Srikakulam/ Rajahmundry) Cement Mortar with Single Coat Sponge Finish.



FLOORING : Premium Quality **RAK** or Equivalent Brand Vitrified Tiled Flooring. Bedroom Flooring will be Wooden Flooring.



DOORS : Main Door with Teak Wood Frame and Non-Teakwood Shutter with Internal Doors. Good Quality Hardware of Brass.



FALSE CEILING: Premium Quality **Saint Gobain** or Equivalent Brand False Ceiling.



PAINTS : Asian Acrylic Emulsion or Equivalent Brand Paint and Oil Paints



ELECTRICAL : Concealed PVC Insulated **Finolex** or Equivalent Brand Copper Wiring with Adequate Points for AC, Lights, Ceiling Fans, Calling Bell, TV, Intercom, CC Cameras Etc.



PLUMBING : All Water Pipelined with **Supreme** Industries or Equivalent Brand CPVC Pipes. All Sanitary are White Color Only (IS Brand).



BATH ROOM TOILETS : **Jaquar** or Equivalent Brand Faucets. Premium Quality **RAK** or Equivalent Brand Anti-Skid Designer Flooring Tiles and Digital Tiles for Walls up to 7 ft Height with Good EWC for Toilets.



LIFT : 6 Passenger Lift of **OTIS / KONE** or Reputed Make.



Location Highlights:

- Located at Kancheru Village, Bhogapuram
- Connecting point to Coastal Corridor
- Near to 6 Lane National Highway (NH-16)
- Very near to Sunray Resorts
- Very near to Bhogapuram International Airport
- Very near to 900 Acres of Miracle Software Park
- Very near to Gumcity
- Near to Bheemili Beach
- Rushikonda IT Sez
- IT Sez Gambhiram & IIM Vizag
- Near to Oakridge, Ameya, Delhi Public School & Avanthi Educational Institutions etc..
- Near to NRI Medical College
- Near to Raghu Engg. College
- Tourism Corridor from Bheemili to Kalingapatnam
- Just 40 Minutes Drive from Visakhapatnam City

Location Map

Not to Scale



Head Office :

48-14-92, Flat No: 401, 4th floor, UNLIMITED Show Room Building, Rama Talkies, Visakhapatnam - 530013.

Email : saninfra2021@gmail.com | www.saninfra.in

Branches : GAJUWAKA | MURALI NAGAR | MADHURAWADA

For Details Contact @

NOTE: This brochure is only a conceptual presentation of the project and not a legal offering. The promoters reserve the right to make changes in plans, specifications and elevation, as deemed fit.